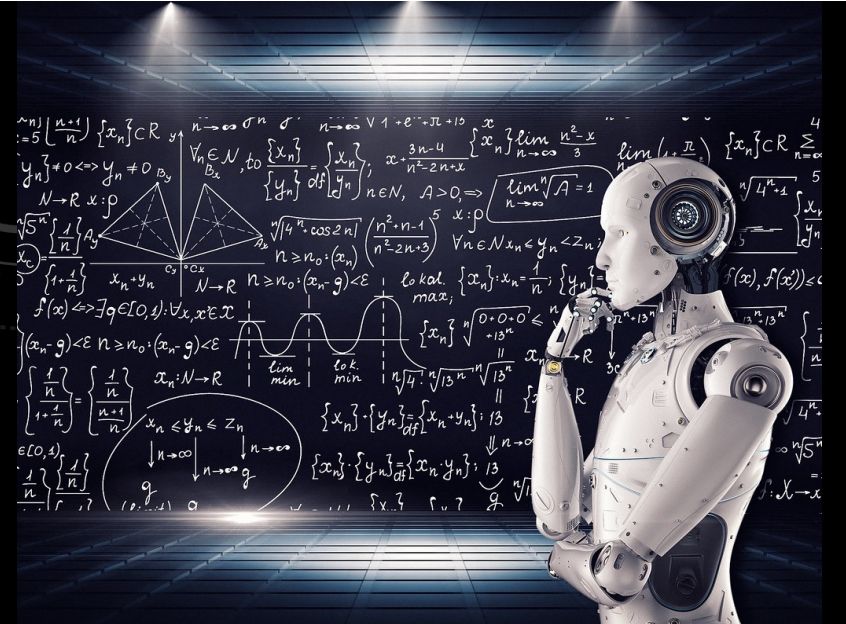


THE IMPACT OF AI-ENABLED INFLUENCE CAMPAIGNS ON DEMOCRACY: RUSSIAN DISINFORMATION DURING THE WAR IN UKRAINE




Source: "Artificial Intelligence & AI & Machine Learning" by mikemacmarketing is licensed under CC BY 2.0

International Society of Military Sciences Conference 2023
November 8, 2023

Pierre Jolicoeur and Anthony Seaboyer
Department of Political Science and Economics
Royal Military College of Canada (RMC)



The background is a dark, textured surface with several faint, light-colored circular patterns. One prominent pattern on the right side features a scale with numerical markings from 80 to 210. Other patterns include concentric circles and dashed lines with arrows, suggesting a technical or scientific theme.

“A democratic system as a whole suffers when the infrastructure of the public can no longer draw the attention of citizens to the relevant issues that require decision-making and can no longer guarantee the formation of competing public opinions, i.e. qualitatively filtered opinions.”

Jürgen Habermas (2021) in: Überlegungen und Hypothesen zu einem erneuten Strukturwandel der politischen Öffentlichkeit.”



Whoever controls AI first controls the world.

Vladimir Putin in 2017

AGENDA

- What is AI – and what is it not?
- How is Russia exploiting AI for influence?
- How is Russia exploiting AI in Ukraine?
- What are the effects of AI exploitation for influence?

WHAT IS AI?

“The science and engineering of making intelligent machines”

John McCarthy (1955)

WHAT IS AI?

Marketing Term

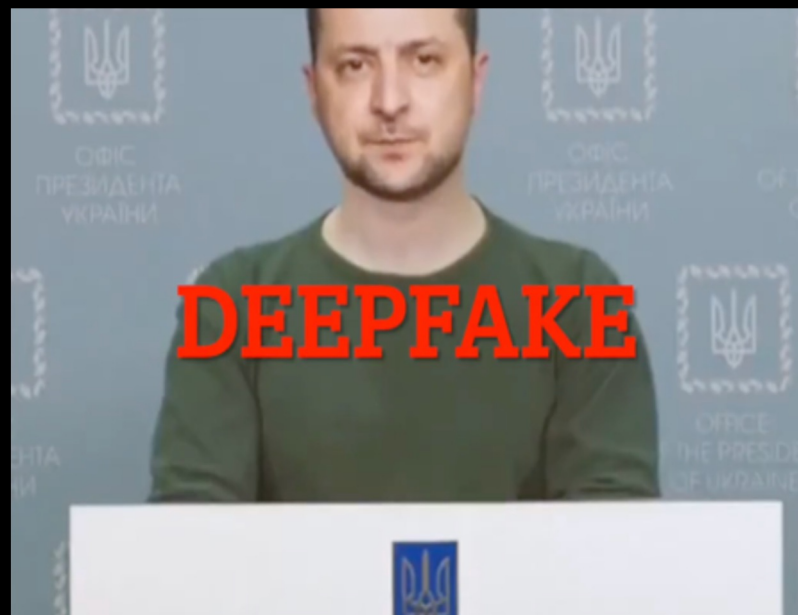


WHAT IS AI?

The background is a dark, almost black, field with faint, light gray technical graphics. On the right side, there are several circular dials or gauges with numerical scales (e.g., 80, 90, 100, 110, 120, 130, 140, 150, 160, 170, 180, 190, 200, 210) and arrows pointing in various directions. Some of these are solid lines, while others are dashed. There are also some curved arrows and partial circles scattered across the background, giving it a technical or scientific feel.

Machine Learning (ML) computer agents improving their perception, knowledge, thinking, or actions based on experience or data. For this, ML draws from computer science, statistics, psychology, neuroscience, economics and control theory.

HOW RUSSIA IS USING AI FOR INFLUENCE



HOW RUSSIA IS USING AI FOR INFLUENCE

The background is a dark, textured surface with several technical or scientific motifs. On the right side, there are two large, semi-circular dials or gauges. The upper dial has a scale from 0 to 210 in increments of 10, with a needle pointing towards the 180 mark. Below it is another dial with a scale from 0 to 140 in increments of 10, with a needle pointing towards the 100 mark. There are also several curved arrows and dashed lines scattered across the background, suggesting a complex system or process.

Russian Reflexive Control

HOW RUSSIA IS USING AI FOR INFLUENCE

The background of the slide is black with several faint, light gray circular patterns. These patterns include concentric circles, dashed lines, and some numbers (like 80, 90, 100, 110, 120, 130, 140, 150, 160, 170, 180, 190, 200, 210) arranged in a circular fashion, resembling a technical or scientific diagram.

- Deep Fakes
- Narrative Distribution
- Creating artificial online persona

HOW RUSSIA IS USING AI FOR INFLUENCE

The background is a dark, textured surface with several faint, light-colored circular patterns. These patterns resemble technical diagrams or data visualizations, with some containing numbers and arrows. The numbers are arranged in a circular sequence, and the arrows point in various directions, suggesting a complex, interconnected system or process.

- Coordination of bots
- Generating content
- Gaming social media algorithms

HOW RUSSIA IS USING AI FOR INFLUENCE

- Information Operations
 - Targeting of Western supporters (unnecessary prolonging of war, cost of sanctions,)
 - Targeting of Ukrainian forces (3 day operation, nuclear weapons)
 - Targeting of “Global South” (USA and West is responsible for war)

EFFECTS OF AI EXPLOITATION FOR INFLUENCE



- Increased surveillance
- Noise
- Disinformation
- Misinformation

Distraction



The background is a dark, textured surface featuring several faint, light-colored circular patterns. These patterns include concentric circles, dashed lines, and numerical scales. One prominent scale on the right side shows numbers from 80 to 210 in increments of 10. Other smaller scales and circular motifs are scattered across the background, creating a technical or scientific aesthetic.

Increased Attention Competition

EFFECTS OF AI EXPLOITATION FOR INFLUENCE

The background is a dark, almost black, field with several faint, light-colored technical or scientific graphics. On the right side, there are several concentric circles and arcs, some with tick marks and numbers, resembling a gauge or a scale. In the bottom left corner, there are some curved lines and arrows, suggesting a circular or rotational motion. The overall aesthetic is that of a technical or data-driven presentation.

- Information Saturation
- Information Overload
- Information Suffocation
- Information Apathy

EFFECTS OF AI EXPLOITATION FOR INFLUENCE

The background is a dark, textured surface with various technical and scientific motifs. On the right side, there are several circular dials or gauges with numerical scales and arrows. One large dial has numbers ranging from 80 to 210. There are also smaller circular elements and dashed lines scattered across the background, suggesting a complex, data-driven environment.

Information Paralysis

EFFECTS OF RUSSIAN AI EXPLOITATION FOR INFLUENCE

The background is a dark, textured surface with various technical and scientific motifs. On the right side, there are several circular dials or gauges with numerical scales and arrows. Some of the numbers visible include 80, 90, 100, 110, 120, 130, 140, 150, 160, 180, 190, and 200. There are also dashed lines and solid lines forming circular patterns, suggesting a complex system or data visualization.

Loss of Agency

The background is a dark gray to black gradient. It features several faint, light gray technical drawing elements. On the right side, there are concentric circles and a scale with numerical markings from 80 to 210. In the bottom right, there are dashed circular paths with arrows indicating direction. In the bottom left, there are solid circular paths with arrows. In the top left, there is a partial circular element with an arrow. The overall aesthetic is technical and precise.

Thank you!

Pierre Jolicoeur and Anthony Seaboyer